

Manage your records. Master your career.

IAMSE Webinar

Mary Halicki, Relationship Manager

Angelique Johnson, Director of Operations



Manage your records. Master your career.



Objectives

- Describe the AAMC and NBME preferred standard in lifelong career documentation for aspiring and practicing physicians
- List the essential features of the Pivio service for each stage of the medical career continuum
- Explain how these features meet the needs
- Identify areas planned for continued development of the service

Mission

- The **AAMC** serves and leads the academic medicine community to improve the health of all.
- **NBME**'s vision is to improve healthcare around the world through assessment.

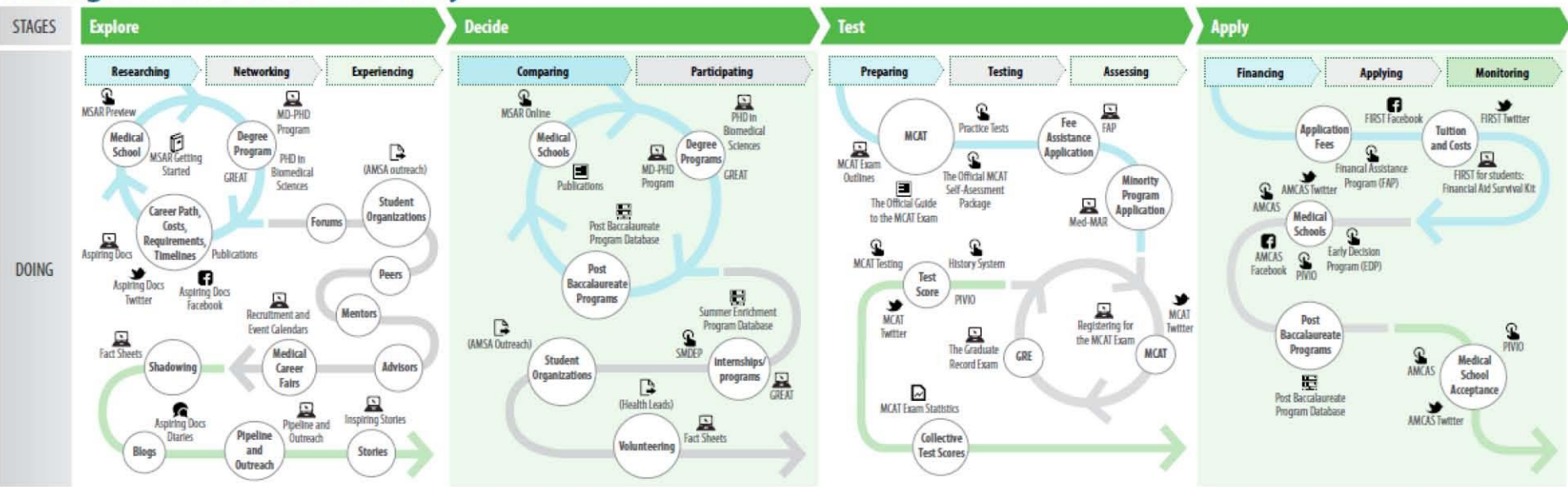
Partial Landscape

- AAMC
 - MCAT
 - AMCAS
 - ERAS
- AMA
- LCME
- NBME
 - USMLE
- ACGME
- ACCME
- ABMS
- FSMB
- MOC
- MOL
- Joint Commission
- CVOs

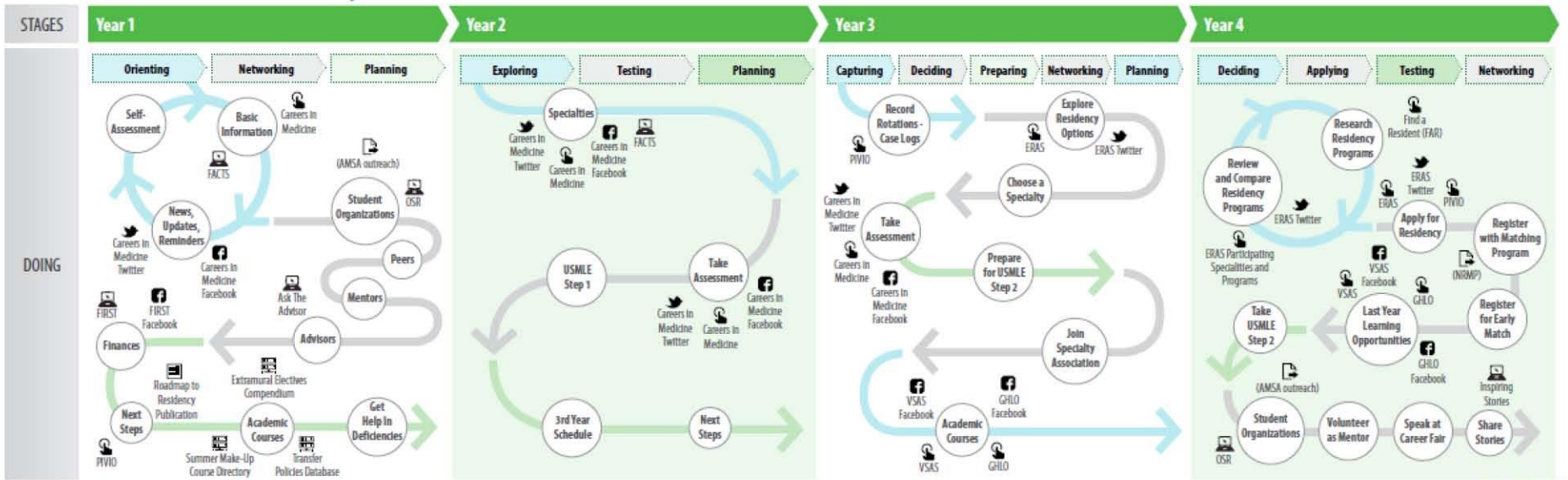
Some of the AAMC's major service programs include:

- ▶ [Medical College Admission Test® \(MCAT®\)](#): A standardized examination designed to assess problem solving, critical thinking, writing skills, and knowledge of science concepts and principles prerequisite to the study of medicine.
- ▶ [American Medical College Application Service® \(AMCAS®\)](#): A non-profit, centralized application processing service that is only available for applicants to the first-year entering classes at participating U.S. medical schools.
- ▶ [Electronic Residency Application Service \(ERAS®\)](#): A means to transmit a standardized application, letters of recommendation, the Medical Student Performance Evaluation (MSPE), transcripts, and other supporting credentials from applicants and designated dean's offices to program directors.
- ▶ [Careers in Medicine®](#): A print and Web-based career planning program that helps medical students understand options in choosing a specialty and identifying residency programs that meet individual career objectives.
- ▶ [FIRST for Medical Education](#): A program that offers a full range of Financial Information Resources, Services, and Tools for applicants, medical students, residents, advisors, and financial aid officers.
- ▶ [MedEdPORTAL®](#): An online resource designed to help faculty publish and share educational resources—focusing exclusively on the continuum of medical education and addressing the unique needs of medical educators.
- ▶ [Visiting Student Application Service \(VSAS®\)](#): An AAMC application designed to make it easier for medical students to apply for senior electives at U.S. Liaison Committee on Medical Education (LCME) medical schools and independent academic medical centers.
- ▶ [Global Health Learning Opportunities \(GHLO™\)](#): Enabling international student mobility for elective placements around the world.
- ▶ [Aspiring Docs](#): A Web site and outreach campaign to increase diversity in medicine by encouraging students of any race, ethnicity, gender, religion, socio-economic status, and sexual orientation to apply and enroll in medical school.

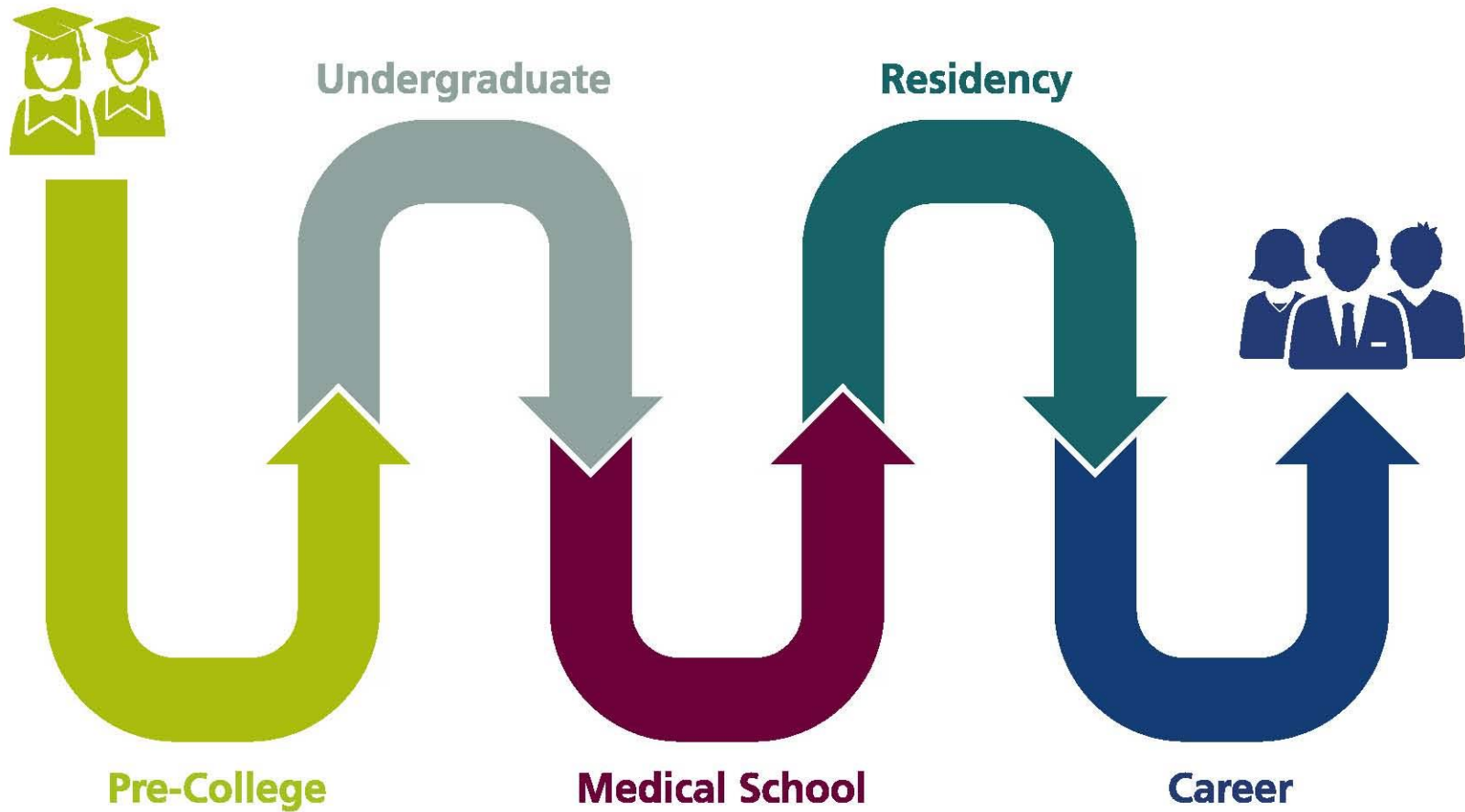
Undergraduate Student's Journey



Medical Student's Journey



The Journey



What is the Pivio™ System?

- An online platform that connects data needed by pre-medical and medical students, residents, and physicians throughout the trajectory of their careers
- Unlike many similar and existing systems, Pivio is designed for the individual user; they control the data within their accounts

Pivio Goals

- 1) Organizing function to help navigate the career documentation and reporting needs across the continuum (pre-med through retirement)
- 2) Competency-tracking function to improve physician competency, leading to better patient care

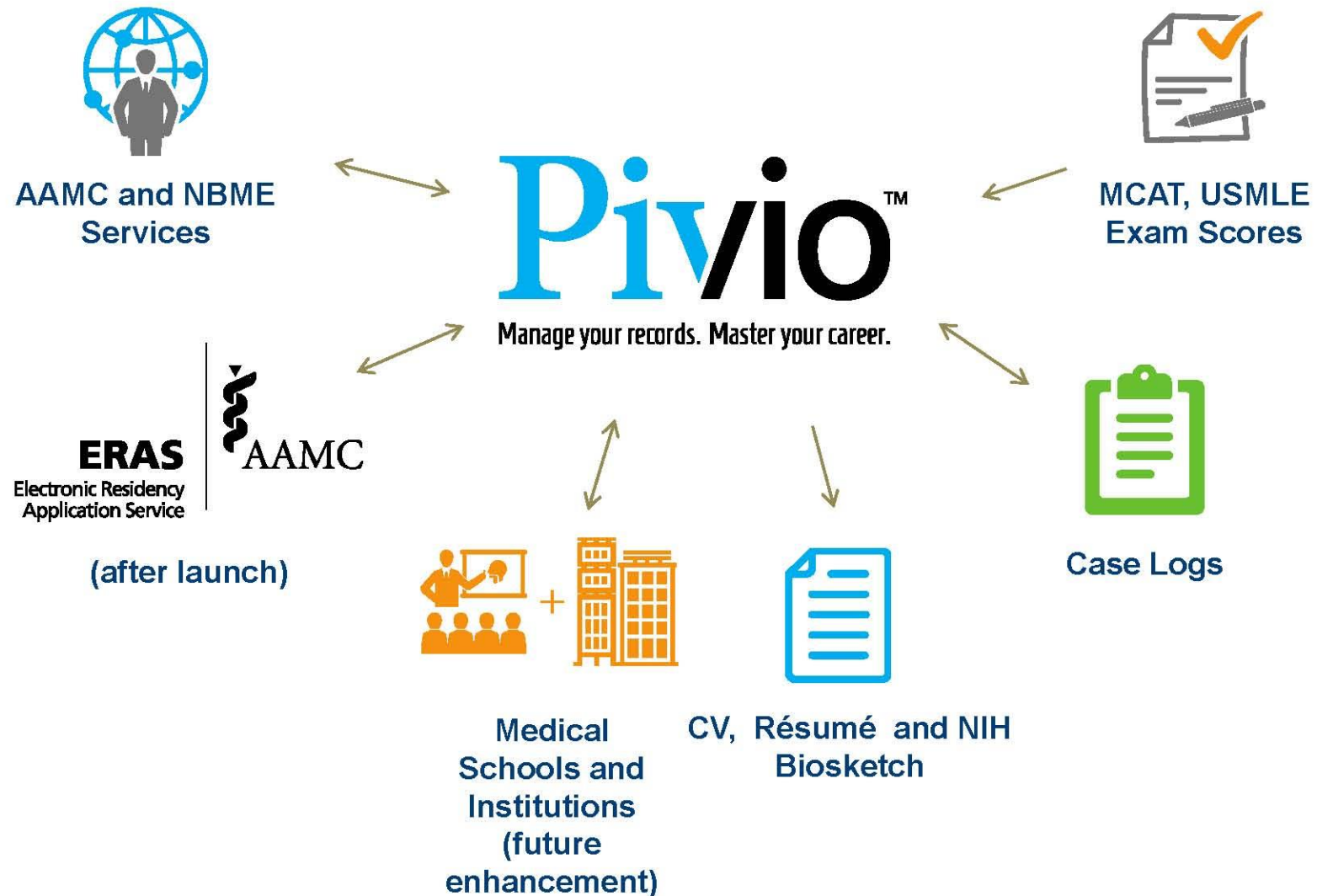
Organizing Function

- Provide a secure, consolidated, online platform that can be used to organize relevant documentation for an aspiring and practicing physician's career journey and growth
- Deliver functionality that offers value to the individual aspiring and practicing physician no matter in which stage of the continuum he/she may be

Competency-tracking (long-term)

- To provide a comprehensive platform that combines documentation standards with competency management and lifelong learning tools/resources (including):
 - Learning plans/roadmaps addressing gaps and achievements
 - Benchmarking and career planning
 - Analytics – making the unconscious → conscious
 - Links to relevant resources/training materials
 - Match identified needs to available resources for performance improvement

AAMC and NBME Preferred Standard in Lifelong Career Documentation for Aspiring and Practicing Physicians



Use Case Examples

- **Premed** – Longitudinally track experiences, tagged to competencies, to prepare for AMCAS®
- **Med student** – Capture USMLE scores, cases, experiences to help prepare for the MyERAS Application
- **Resident** – Continue tracking cases (imported from ACGME), certifications to prepopulate/expedite CVO application
- **MD Faculty** – Track experiences for P&T; mentor students/residents
- **Physician** – Track MOC/MOL progression/status, competencies
- **Institution** – Cohort view of competencies/performance

Pivio Features Development

The current version of Pivio contains the basic features of the system. As the system develops, we plan to include the following:

- Competency tracking
- Reflection and learning plan templates
- Benchmarking/comparative tools
- Integration with other AAMC and NBME services
- Features for physicians and faculty
- Sharing/communities
- Institutional model

Pivio Support of Standards

- Working with MedBiquitous to include the Educational Trajectory, Professional Profile, and other standards
- Working with the Postsecondary Electronic Standards Council (PESC) to create a more widely used electronic portfolio standard

Development Timeline



Partner Program
January – December 2014



Screenshots

- [Home](#)
- [Personal Info](#)
- [My Content](#)
- [Notes](#)
- [Experience](#)
- [Education](#)
- [Licensure](#)
- [Certification](#)
- [Awards & Accomplishments](#)
- [Memberships](#)
- [Assessments](#)
- [Applications](#)
- [ACGME Case Log App](#)
- [Publications](#)
- [Presentations](#)
- [Reports](#)

Retrieve your data from
AAMC & NBME

[RETRIEVE](#)



[Change Image](#)

Angel A. Smith

Director of Operations - AAMC / Pivio

[Washington, DC](#)

RECENT NOTES

[+ Add](#)



Excited to be presenting at the IAMSE webinar in March.

a minute ago



This is a test note to see how the Tags will render.

5 days ago

Annual Exam

1 year(s) old Not-Specified



Annual Exam of Jellyfish progression

3 months ago

[View All](#)

CUSTOM REPORTS



Research Experience

3 months ago



Personal Info

3 months ago



Presentations

44 years ago

[View All](#)

PIVIO PROGRESS

40%

- [+ Add personal info](#) (87% complete)
- [+ Add experience](#) (13% complete)
- [+ Add education](#) (75% complete)
- [+ Add licensure](#) (0% complete)
- [+ Add certifications](#) (25% complete)

RECENT UPDATES

- [i](#) You have updated your contact info.
2 minutes ago
- [i](#) You have updated your contact info.
2 minutes ago
- [m](#) You have edited your medical education.
18 days ago

UPCOMING

There are no upcoming expirations.

UPCOMING EVENTS [i](#)

- Home
- Personal Info
- My Content
- Notes
- Experience**
- Education
- Licensure
- Certification
- Awards & Accomplishments
- Memberships
- Assessments
- Applications
- ACGME Case Log App
- Publications
- Presentations
- Reports

Retrieve your data from
AAMC & NBME

RETRIEVE



Change Image

Angel A. Smith

Director of Operations - AAMC / Pivio

Washington, DC

- | | | | | | | | |
|------------------------|------------------------|------------------------|------------------------|-------------------|------------------------|---------------------|-------|
| RESEARCH EXPERIENCE | CLINICAL ACTIVITIES | VOLUNTEER / SERVICE | ELECTED / APPOINTED | EMPLOYMENT | TEACHING ACTIVITIES | MILITARY SERVICE | OTHER |
|------------------------|------------------------|------------------------|------------------------|-------------------|------------------------|---------------------|-------|

EMPLOYMENT ⓘ

+ Add

Director of Operations - AAMC / Pivio



Washington, DC, USA

December 2012 - Present

Director of Operations

Director of Client Engagement - Management Associates



Washington, DC

April 2012 - December 2012

Engaging and innovative new venture focusing on customer satisfaction.

- Home
- Personal Info
- My Content**
- Notes
- Experience
- Education
- Licensure
- Certification
- Awards & Accomplishments
- Memberships
- Assessments
- Applications
- ACGME Case Log App
- Publications
- Presentations
- Reports

Retrieve your data from
AAMC & NBME

RETRIEVE



Change Image

Angel A. Smith

Director of Operations - AAMC / Pivio

Washington, DC

MY CONTENT ⓘ

+ Add

ALL

CASES

LINKS

VIDEOS

DOCUMENTS

IMAGES

EVENTS



CFAS Meeting

<https://www.aamc.org/meetings/>

Nashville, TN

3/6/2014 12:00 PM

Meeting of Faculty

2 minutes ago



ORR Meeting

<https://www.aamc.org/meetings/>

Nashville, nT

3/6/2014 12:00 PM

Meeting of the Organization of Resident Representatives

3 minutes ago



[Mileage.pdf \(158.9 kB\)](#)

one month ago



- [Home](#)
- [Personal Info](#)
- [My Content](#)
- [Notes](#)
- [Experience](#)
- [Education](#)
- [Licensure](#)
- [Certification](#)
- [Awards & Accomplishments](#)
- [Memberships](#)
- [Assessments](#)
- [Applications](#)
- [ACGME Case Log App](#)
- [Publications](#)
- [Presentations](#)
- [Reports](#)**

Retrieve your data from
AAMC & NBME

[RETRIEVE](#)

[Change Image](#)

Angel A. Smith

Director of Operations - AAMC / Pivio

[Washington, DC](#)

[CV](#)
[RESUME](#)
[BIOSKETCH](#)
[CUSTOM](#)
[EXPORT TO PDF](#)
[EXPORT TO MICROSOFT WORD](#)

BIOGRAPHICAL SKETCH

Provide the following information for the Senior/key personnel and other significant contributors in the order listed on Form Page2. Follow this format for each person. **DO NOT EXCEED FOUR PAGES.**

NAME

Smith, Angel, A.

POSITION TITLE

Director of Operations

eRA COMMONS USER NAME (credential e.g., agency login)

EDUCATION/TRAINING (Begin with baccalaureate or other initial professional education, such as nursing, include postdoctoral training and residency training if applicable)

| Institution and Location | Degree | MM/YY | FIELD OF STUDY |
|--|--------|-------|---------------------------------|
| Johns Hopkins University School of Medicine | M.D. | 05/17 | Internal Medicine |
| Clarion University of Pennsylvania, Philadelphia | B.B.A. | 01/92 | Business Management & Marketing |

- Home
- Personal Info
- My Content
- Notes
- Experience
- Education
- Licensure
- Certification
- Awards & Accomplishments
- Memberships
- Assessments
- Applications
- ACGME Case Log App
- Publications
- Presentations

Reports

Retrieve your data from
AAMC & NBME

RETRIEVE



Angel A. Smith

ADD CUSTOM REPORT

Name *

SELECT SECTIONS

- ☐ Personal Info
- ☐ Notes
- ☐ Experience
 - ☐ Research Experience
 - ☐ Volunteer / Service
 - ☐ Employment
 - ☐ Military Service
- ☐ Education
 - ☐ Educational
- ☐ Licensure
- ☐ Certification
- ☐ Clinical Activities
- ☐ Elected / Appointed
- ☐ Teaching Activities
- ☐ Professional Development

Cancel

ADD

+ Add



Need to get in touch?

- For information visit: www.pivio.org
- General inquiries – info@pivio.org
- Social Media:
 - @myPivio   
- The Pivio Team
 - Joshua Jacobs, MD jjacobs@aamc.org
 - Angelique Johnson amjohnson@aamc.org
 - PJ Kania pkania@aamc.org
 - Mary Halicki mhalicki@aamc.org

Questions/Feedback